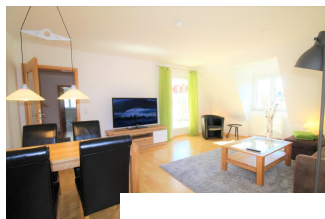


rent terrace apartment	Rent incl. add. costs 1.050,00 EUR per Month	Living space ca. 61,00 qm	Number of rooms 2,0	Available from 30.06.2021
---------------------------	---	------------------------------	------------------------	------------------------------

### Other dates

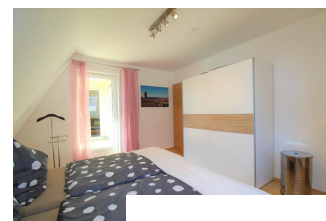
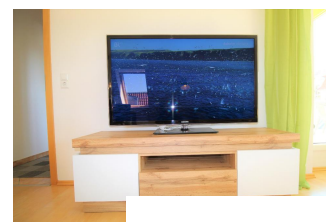
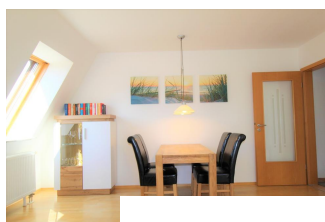
District	Blasewitz
Deposit	1.500,00 EUR
Floor	
Available until	Open-ended
Smoking / Nonsmoker	Not Applicable
Balcony	yes
Elevator	Yes



### Facilities

- **direction balcony / te..**
- east
- **bathroom**
- with bathtub
- with washing machine
- **flooring material**
- laminate
- **glazing**
- double-glazed
- **kitchen**
- fitted kitchen
- **interior shutters (typ..**
- synthetic material
- **technics**
- cable TV
- Wifi reception
- **type of beaconing**
- gas
- **type of heating**
- central heating system
- **with window**
- 

- south
- with shower
- with window
- tiles
- noise insulation
- TV

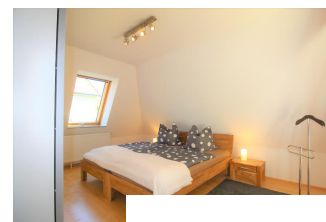
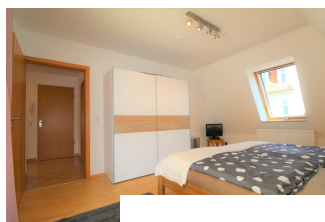


### References

Please read our Notes on currency conversion under <http://www.homecompany.de/en/currency-info>

### Website synopsis

<http://dresden.homecompany.de/en/object/ROD11V2ZDG>



### Description