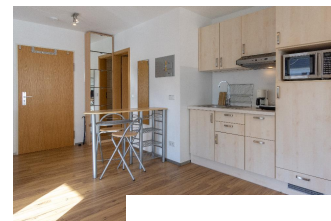


short-term rental apartment on higher floor	Rent incl. add. costs 700,00 EUR per Month	Living space ca. 30,00 qm	Number of rooms 1,0	Available from 02.12.2020
--	---	------------------------------	------------------------	------------------------------

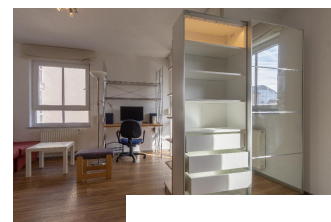
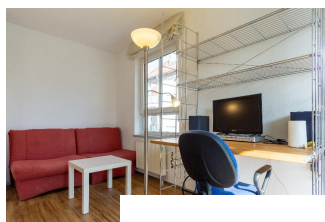
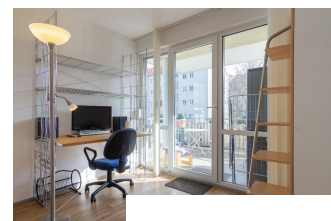
Other dates

District	Plauen
Deposit	1.000,00 EUR
Floor	
Available until	Open-ended
Maximum number of tenants	2
Smoking / Nonsmoker	Non-smokers only
Balcony	yes
Elevator	No



Facilities

- direction balcony / terrace
 - east
 - bathroom
 - with shower
 - flooring material
 - laminate
 - kitchen
 - fitted kitchen
 - further rooms
 - storage room
 - interior shutters (typical)
 - synthetic material
 - technics
 - Wifi reception
 - type of beaconing
 - district heating
 - type of heating
 - central heating system
- tiles

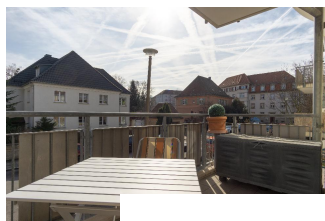


References

Please read our Notes on currency conversion under <http://www.homecompany.de/en/currency-info>

Website synopsis

<http://dresden.homecompany.de/en/object/LIE38M1Z10GRE>



Description

Print out 02.12.2020