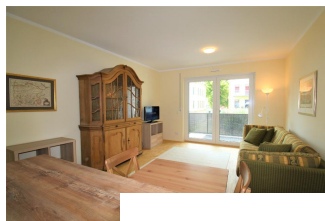


short-term rental apartment on higher floor	Rent incl. add. costs 1.450,00 EUR per Month	Living space ca. 71,70 qm	Number of rooms 3,0	Available from 20.01.2021
---	---	------------------------------	------------------------	------------------------------

### Other dates

District	Löbtau
Deposit	2.000,00 EUR
Floor	
Available until	Open-ended
Maximum number of tenants	3
Smoking / Nonsmoker	Non-smokers only
Balcony	yes
Elevator	Yes
Garden	Yes



### Facilities

- **applicability**
- suitable for communal apartments for the elderly
- wheelchair access
- **direction balcony / terrace**
- west
- **bathroom**
- with bathtub
- **doors (inside)**
- wood
- **flooring material**
- parquet
- **glazing**
- noise insulation
- **kitchen**
- with dishwasher
- open-plan kitchen
- **further rooms**
- storage room
- **services**
- facility manager
- **technics**
- TV
- 
- 

- with shower

- triple-glazed

- fitted kitchen

- washing / drying room



### References

Please read our Notes on currency conversion under <http://www.homecompany.de/en/currency-info>

### Website synopsis

<http://dresden.homecompany.de/en/object/LAW6M3Z2OGMI>

### Description

Print out 20.01.2021