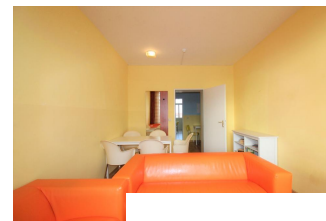
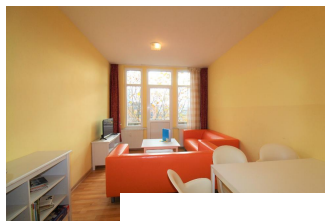


rent apartment on higher floor	Rent incl. add. costs 1.100,00 EUR per Month	Living space ca. 80,00 qm	Number of rooms 3,0	Available from 16.01.2021
-----------------------------------	---	------------------------------	------------------------	------------------------------

### Other dates

District	Löbtau
Deposit	1.000,00 EUR
Floor	
Available until	Open-ended
Smoking / Nonsmoker	Not Applicable
Balcony	no
Elevator	No
Garden	No



### Facilities

- **applicability**
- suitable for communal apartments **not suitable for the elderly**
- **bathroom**
- with bathtub
- with window
- **flooring material**
- laminate
- **glazing**
- double-glazed
- **kitchen**
- fitted kitchen
- **further rooms**
- guest toilet
- **services**
- facility manager
- **technics**
- cable TV
- Wifi reception
- **type of beaconing**
- gas
- **type of heating**
- 
- 

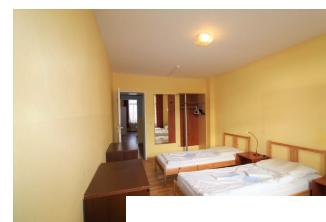
- with shower

- tiles

- noise insulation

- cleaning

- TV

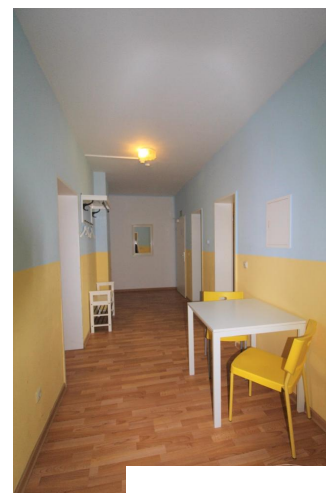
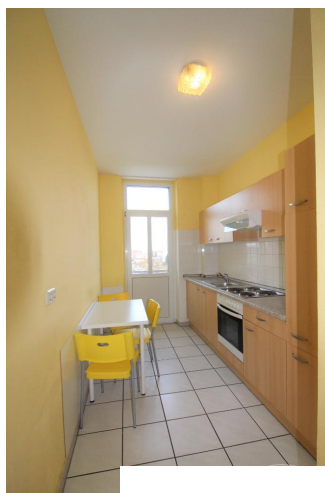


### References

Please read our Notes on currency conversion under <http://www.homecompany.de/en/currency-info>

### Website synopsis

<http://dresden.homecompany.de/en/object/EME2M3Z3OGL>



### Description

Print out 16.01.2021